



BUSINESS INDICATORS

**AUSTRALIAN
CAPITAL
TERRITORY**

EMBARGO: 11:30AM (CANBERRA TIME) THURS 27 JAN 2000

C O N T E N T S

	<i>page</i>
Notes	2
Summary of findings	3
Selected business indicators	5
FEATURE ARTICLE	
Transition from Education to Work, May 1999	6
TABLES	
1 Business expectations: Sales, March quarter 2000/ December quarter 2000, expected aggregate change	8
2 Business indicators	9
3 ACT in relation to the rest of Australia	12
4 ACT in relation to the rest of Australia—percentage changes	13

- For further information about these and related statistics, contact Lenya Redfern on Canberra 02 6207 0446 or Will Blythe on Canberra 02 6207 0311, or Client Services in any ABS office as shown on the back cover of this publication.

NOTES

FORTHCOMING ISSUES

<i>ISSUE</i>	<i>RELEASE DATE</i>
February 2000	22 February 2000
March 2000	20 March 2000
April 2000	27 April 2000
May 2000	22 May 2000
June 2000	23 June 2000
July 2000	28 July 2000

SYMBOLS AND OTHER USAGES

ACT	Australian Capital Territory
n.a.	not available
no.	number
n.p.	not available for publication
p	preliminary
*	Represents data with a standard error of greater than 25%. Caution should be exercised when using this data.
—	nil or rounded to zero

Dalma Jacobs
Regional Director, Australian Capital Territory

SUMMARY OF FINDINGS

UPDATED SERIES

Series updated since the December 1999 issue are: building approvals, motor vehicle registrations, labour force, industrial disputes, retail turnover, business expectations, job vacancies, tourist accommodation and private new capital expenditure. The feature article, beginning on page 6 is on the Transition from Education to Work.

NOTABLE MOVEMENTS

Building approvals The trend number of dwelling units approved in the ACT increased by 2.7% to 227 dwelling units in November 1999. Nationally, the trend number of dwelling units approved increased by 0.9% to 14,810 dwelling units in November 1999.

The value of non-residential building approvals in the ACT was \$51.1 million in November 1999, an increase of \$37.7 million from the previous month. There was also an increase of \$44.9 million compared to November 1998. Nationally, the value of non-residential building approvals increased by 15.4% from the previous month and was down 20.2% from November 1998.

Motor vehicle registration The trend estimate for ACT new motor vehicle registrations in November 1999 was 1,092, up 0.8% from the previous month, and down 11.7% compared to November 1998. Nationally, the trend for total new motor vehicle registrations in November 1999 remained steady at 60,659 since October 1999, and was down 8.6% compared to November 1998.

Labour force In December 1999, the trend unemployment rate for the ACT remained stable at 5.7% (9,900 persons) compared to the previous month, but decreased 0.4 percentage points (down from 6.1%) compared to December 1998. Compared with the previous month, trend employment increased by 0.2% (to 164,500 persons). Nationally, trend employment increased by 0.2% (to 8,905,700 persons) from the previous month, while the trend unemployment decreased by 0.1% (to 665,000 persons) for December 1999. The trend participation rate in the ACT increased by 0.1 percentage points to 73.2% compared to the previous month, while nationally the trend participation rate remained steady at 63.4%.

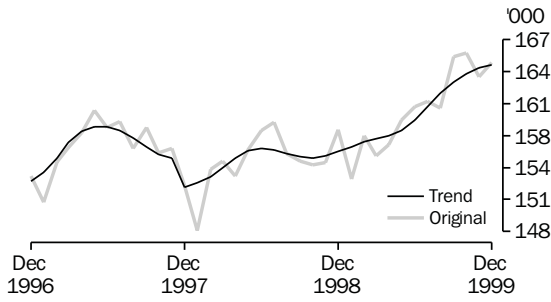
Industrial disputes For the 12 months ended September 1999 there were 33 working days lost per thousand employees in the ACT compared to 71 days nationally. In comparison with the 12 months ended September 1998, there was an increase of 3.0% for the ACT and a decrease of 13.4% nationally in the number of working days lost per thousand employees.

Retail turnover The trend estimate for retail turnover in the ACT for November 1999 was \$229.7 million, an increase of 0.6% from the previous month and was up 8.6% compared to November 1998. The national trend retail turnover recorded an increase of 0.7% from the previous month and was up 7.7% compared to the previous year.

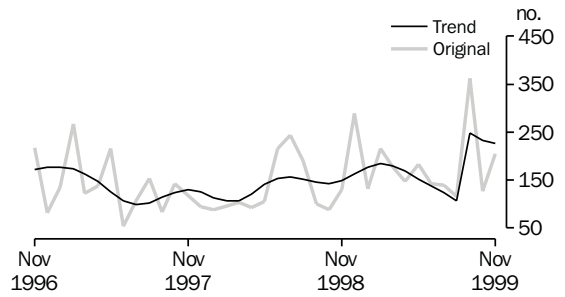
Tourist accommodation	The room occupancy rate for ACT hotels, motels and guest houses in the September quarter 1999 was 66.4% up 5.5 percentage points from the previous quarter, and up 8 percentage points from the September quarter 1998. Nationally, in the September quarter, the room occupancy rate increased by 2.1 percentage points to 60.8% from the corresponding quarter of the previous year.
Business expectations	In November 1999, the trend unemployment rate for the ACT Business expectations in the ACT indicate a 5.4% decrease in expected income from the sales of goods and services in the short term for the March quarter 2000. Nationally, there is an expected short term decrease of 0.7% in the March quarter 2000. In the medium term (March quarter 1999 to March 2000), growth of 0.1% in sales is expected for the ACT, whilst the national expectation is 1.8%.
Private new capital expenditure	The trend private new capital expenditure in the ACT in the September quarter 1999 was \$61 million, a decrease of 18.7% from the previous quarter, and also down 29.9% compared to the September quarter 1998. Private new capital expenditure on buildings decreased 10.5% from the previous quarter, equipment also decreased by 21.4% from the previous quarter. Since the September quarter 1998, private new capital expenditure on buildings decreased by 34.6%, likewise equipment decreased by 27.9%. Nationally, the trend private new capital expenditure was down 10.1% from the previous quarter and down 0.8% since the September quarter 1998.
Job vacancies	There were 3,800 job vacancies in the ACT for the November quarter 1999 recording a 15.2% increase from the previous quarter, and an increase of 137.5% from the corresponding quarter of the previous year. Nationally, job vacancies for November quarter 1999 decreased by 6.2% since the August quarter, and increased 6.2% on the previous year.

SELECTED BUSINESS INDICATORS

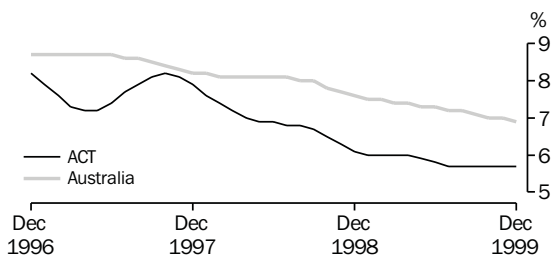
LABOUR FORCE, Employment



BUILDING APPROVAL—DWELLING UNITS APPROVED

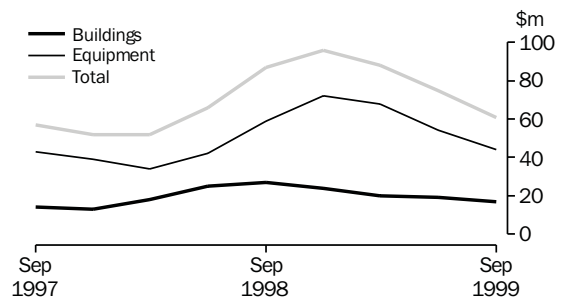


LABOUR FORCE—TREND UNEMPLOYMENT RATE

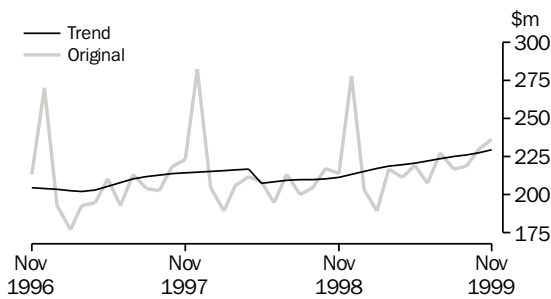


Note: Trend estimates for March 1999 to August 1999 have been revised.

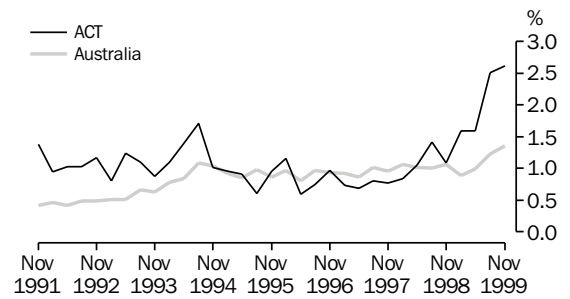
PRIVATE NEW CAPITAL EXPENDITURE: TREND



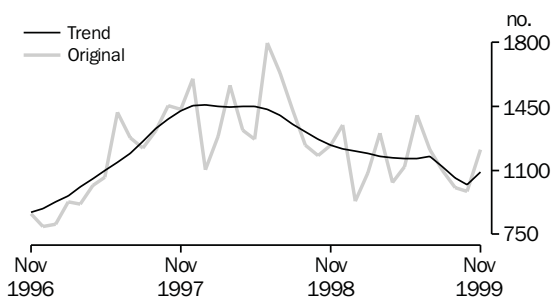
RETAIL TURNOVER



JOB VACANCY RATES



NEW MOTOR VEHICLE REGISTRATIONS



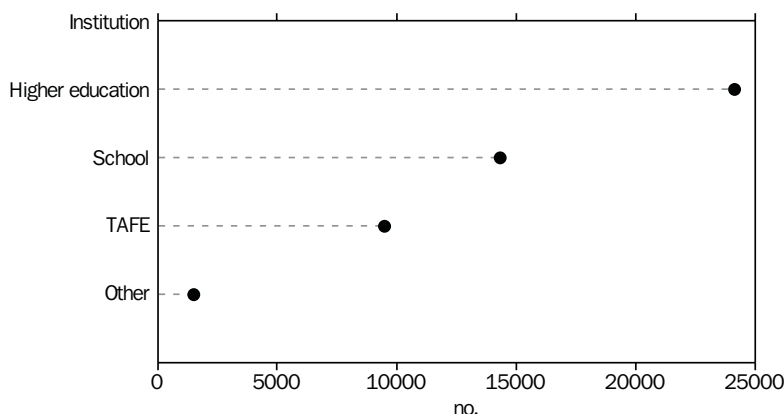
In the ACT the Transition from Education to Work survey conducted in May 1999 found that people with recognised post-school qualifications had a higher labour force participation rate and substantially lower unemployment rate than people without recognised post-school qualifications. People with recognised post-school qualifications were more likely to have full-time jobs than those without recognised post-school qualifications. Of those persons without recognised post-school qualifications who were employed, 36% were working part-time.

EDUCATIONAL ATTENDANCE

In May 1999 there were 53,900 students (25% of the resident population) in the ACT, aged 15–64, attending an educational institution, in comparison with 52,000 students (25% of the population) in May 1998. In May 1999, 29,000 students (14% of the resident population) were attending full-time education. Some 49,500 persons were studying for a recognised educational qualification, 1,500 persons were in courses leading to a non-recognised education qualification, and 2,900 were studying, but not for a qualification. Nationally, there were 1,236,800 students aged 15–64 years attending full-time education in May 1999, 10% of the population in this age range.

In the ACT in May 1999, 73% (39,500) of total students were attending a tertiary institution, including 47% (25,400) attending a higher education institution, 20% (11,000) at Technical and Further Education institutions (TAFE) and 6% (3,000) were at other tertiary educational institutions, while 27% (14,400) were at school.

TYPE OF INSTITUTION ATTENDED BY STUDENTS



Of residents aged 15–64, in the ACT, 14,400 were school students (7% of that population) in May 1999, with, 7,700 males and 6,600 females and 39,500 were tertiary students (19% of that population) where females were dominant, 20,900 students and 18,600 male students.

In higher education there were 24,200 students attending study leading to a recognised qualification, with 11,500 male and 12,700 female students. TAFE attendance, leading to recognised qualifications were recorded at 9,500 students, comprising approximately equal numbers of male and female students, 4,700 and 4,800 respectively.

EDUCATIONAL ATTAINMENT

In May 1999, 112,400 persons or 53% of the ACT population aged 15–64 years, had recognised post-school qualifications. This compares with the national figure of 5,452,400 persons or 44% of people aged 15–64 years. Of people with post-school qualifications in the ACT, 11% (11,800) had higher degrees and 34% (38,300) had bachelor degrees. In terms of vocational qualifications, another 14% (16,100) had skilled vocational qualifications and 17% (18,800) had basic vocational qualifications. Comparable national post-school qualification figures are: higher degrees 5%, bachelor degrees 26%, skilled vocational qualifications 26% and basic vocational qualifications 20%.

About 40% (84,700) of the ACT population aged 15–64 years had no post-school qualifications of which 47,200 had completed high school while 37,500 had not. This compares with the national figure of 6,400,000 (51%).

(Some 7% of the ACT population aged 15–64 years were still at school.)

Labour force participation rates for persons with recognised post-school qualifications remained higher (88%) than those without post-school qualifications (74%). These rates were above the national rates of 84% and 68% respectively. The unemployment rate for persons with recognised post-school qualifications in the ACT (4%) was half the rate for those without post-school qualifications (8%).

In the ACT in May 1999, of the 112,400 persons aged 15–64 years with recognised post-school qualifications, 85% (95,000) were employed. Of this group of employed persons 83% (79,300) were employed full-time and 17% (15,700) were employed part-time. Of all persons aged 15–64 years with recognised post-school qualifications, 12% (13,900 persons) were not in the labour force while 3,500 were classified as unemployed.

There were 84,700 persons aged 15–64 years without recognised post-school qualifications, of which 68% (58,000) were employed. Of this group of employed persons 37,000 (64%) were employed full-time and 20,900 (36%) were employed part-time. Of all persons aged 15–64 years without recognised post-school qualifications, 26% (22,000) were not in the labour force while 4,800 were classified as unemployed.

In the ACT 53% (4,300) of lone parents with dependants had recognised post-school qualifications, while 29% (2,400) had completed high school and 18% (1,400) of lone parents with dependants did not complete high school.

1

BUSINESS EXPECTATIONS: SALES

<i>Period</i>	<i>ACT</i>	<i>Aust.</i>
	%	%
Short-term		
Dec qtr 1997–Mar qtr 1998	-1.1	-0.3
Mar qtr 1998–Jun qtr 1998	-0.1	1.7
Jun qtr 1998–Sep qtr 1998	2.7	1.1
Sep qtr 1998–Dec qtr 1998	3.5	1.6
Dec qtr 1998–Mar qtr 1999	-2.7	-0.9
Mar qtr 1999–Jun qtr 1999	0.4	1.8
Jun qtr 1999–Sep qtr 1999	1.4	1.8
Sep qtr 1999–Dec qtr 1999	1.9	2.4
Dec qtr 1999–Mar qtr 2000	-5.4	-0.7
Medium-term		
Dec qtr 1997–Dec qtr 1998	2.9	3.0
Mar qtr 1998–Mar qtr 1999	2.6	2.6
Jun qtr 1998–Jun qtr 1999	6.9	2.7
Sep qtr 1998–Sep qtr 1999	7.5	2.9
Dec qtr 1998–Dec qtr 1999	2.6	2.7
Mar qtr 1999–Mar qtr 2000	1.7	2.3
Jun qtr 1999–Jun qtr 2000	5.7	3.3
Sep qtr 1999–Sep qtr 2000	2.8	2.7
Dec qtr 1999–Dec qtr 2000	0.1	1.8

Indicator	Unit	ACT			Aust.		
		Latest figure	% change from		Latest figure	% change from	
			Previous period	Same period previous year		Previous period	Same period previous year
POPULATION, VITAL AND LABOUR							
POPULATION, June qtr 99	'000	310.2	0.3	0.7	18 966.8	0.3	1.3
Natural increase	no.	886	20.9	24.4	30 378	1.0	0.3
Net migration	no.	117	-44.6	54.5	18 041	-51.4	2.0
Total increase	no.	1 003	22.8	150.0	48 419	-27.9	0.9
LABOUR FORCE, Dec 99							
Original series							
Employed	'000	164.7	0.9	4.2	9 046.8	1.7	2.9
Unemployed	'000	9.0	-8.2	-7.2	667.2	9.4	-5.3
Unemployment rate	%	5.2	0.4	-0.6	6.9	0.5	-0.5
Participation rate	%	72.9	0.2	1.6	64.3	1.3	0.4
Long-term unemployed, Nov 99	no.	2 849	40.7	-14.6	188 543	-3.9	-22.2
Long-term unemployed as percentage of total unemployed		29.2	-5.8	-9.4	30.9	0.4	-3.6
Trend series							
Employed	'000	164.5	0.2	5.5	8 905.7	0.2	2.7
Unemployed	'000	9.9	—	-2.0	665.0	-0.4	-7.0
Unemployment rate	%	5.7	—	-0.4	6.9	-0.1	-0.7
Participation rate	%	73.2	0.1	2.7	63.4	—	0.3
WAGE AND SALARY EARNERS							
Number employed—Trend series, May qtr 99							
Public sector	'000	66.8	1.1	-2.9	1 447.7	0.2	-1.2
Private sector	'000	84.7	6.7	22.0	5 749.4	0.5	6.2
Total	'000	151.5	4.2	9.6	7 197.1	0.4	4.6
Gross earnings—Original series, June qtr 99							
Public sector	\$m	782.0	-10.7	-14.2	14 712.9	0.5	-1.1
Private sector	\$m	690.2	19.2	46.1	46 279.8	2.8	9.7
Total	\$m	1 472.2	1.2	6.4	60 992.8	2.2	6.9
JOB VACANCIES, Nov qtr 99	'000	3.8	15.2	137.5	103.2	-6.2	6.2
INDUSTRIAL DISPUTES IN PROGRESS, Sep 99							
Working days lost	'000	0.0	n.a.	n.a.	64.8	-50.2	35.0
Days lost per '000 employees (year ended Sep 99)	no.	33.0	-2.9	3.1	71.0	2.9	-13.4
BUILDING AND CONSTRUCTION							
HOUSING FINANCE, Oct 99							
Secured commitments to individuals for							
Original series							
Construction of dwellings	\$m	13.0	—	160.0	1 002.0	0.8	39.0
Purchase of new dwellings	\$m	3.0	—	-25.0	268.0	9.8	16.5
Purchase of established dwellings	\$m	92.0	9.5	58.6	5 330.0	4.5	47.1
Re-financing	\$m	16.0	33.3	23.1	985.0	3.6	37.0
Total housing commitments	\$m	130.0	8.3	54.8	6 600.0	4.1	44.3
Seasonally adjusted series							
Total housing commitments	\$m	139.0	24.1	58.0	7 034.0	15.8	51.7
Trend series							
Dwelling units financed	no.	975	3.5	34.1	47 605	2.0	25.0
Total housing commitments	\$m	123.0	4.2	48.2	6 475.0	2.9	38.7
BUILDING APPROVALS, Nov 99							
Original series							
Dwelling units	no.	205	61.4	57.7	15 712	13.0	16.5
Value of new residential	\$m	23.7	46.3	50.0	1 904.4	14.3	23.4
Value of residential alterations and additions	\$m	5.6	-3.4	24.4	280.6	-2.5	13.0
Value of non-residential	\$m	51.1	281.3	724.2	989.5	15.4	-20.2
Value of total building	\$m	80.4	127.1	202.3	3 174.5	12.9	4.8
Trend series							
Dwelling units	no.	227	2.7	52.3	14 810	0.9	14.5

Indicator	Unit	ACT			Aust.		
		% change from			% change from		
		Latest figure	Previous period	Same period previous year	Latest figure	Previous period	Same period previous year
BUILDING AND CONSTRUCTION continued							
BUILDING COMMENCEMENTS, Jun qtr 99							
New houses	no.	373	30.9	57.4	26 747	17.0	2.1
Value of houses commenced	\$m	48.9	26.7	61.9	3 314.9	18.1	9.2
Value of non-residential building commenced	\$m	68.1	-53.0	-22.4	2 511.6	-15.5	-22.6
Value of total commencements	\$m	149.0	-34.6	9.6	7 650.3	-0.2	-7.2
PRICE INDEXES							
Established house price index, Mar qtr 99		129.7	0.2	2.4	136.8	1.9	7.8
ENGINEERING CONSTRUCTION (Jun qtr 99)							
Private sector							
Value of work commenced	\$m	12.4	-73.8	-10.8	2 879.4	3.9	12.5
Value of work done	\$m	18.2	44.4	44.4	2 902.5	10.5	—
Value of work yet to be done	\$m	37.0	-14.5	203.3	5 470.8	-0.4	-15.2
Value of work done by public sector	\$m	28.9	-1.7	-4.6	2 104.7	26.4	6.2
PRICES, WAGES AND CONSUMER SPENDING							
CONSUMER PRICE INDEX, Sept qtr 99							
Food(a)		127.7	-0.5	0.1	128.5	0.5	3.0
Housing(a)		96.0	1.4	2.3	98.1	1.6	3.5
Transportation(a)		131.6	2.7	2.8	126.9	3.3	3.8
All groups(a)		122.4	0.7	0.9	123.4	0.9	1.7
AVERAGE WEEKLY EARNINGS, Aug qtr 99							
Original series							
Males	\$	899.4	1.5	-2.7	796.2	-0.3	1.5
Females	\$	783.7	1.0	1.2	675.7	0.9	3.5
Persons	\$	851.7	1.2	-1.1	751.8	0.1	2.1
Trend series							
Males	\$	890.5	0.4	-2.1	798.6	0.5	2.0
Females	\$	785.0	0.8	1.5	675.9	0.7	3.3
Persons	\$	845.6	0.4	-0.9	753.7	0.6	2.5
WAGE COST INDEX, Jun qtr 99							
Public sector(b)		104.5	0.1	3.2	106.2	0.3	3.9
Private sector(b)		104.3	0.6	2.7	105.1	0.6	2.9
Total(b)		104.4	0.3	3.0	105.4	0.6	3.2
RETAIL TURNOVER, Nov 99							
Original series							
Food retailing	\$m	82.7	-1.5	6.2	4 812.2	-2.2	5.4
Department stores	\$m	27.8	15.8	7.8	1 207.5	15.7	6.1
Hospitality and services	\$m	34.6	1.8	0.3	2 077.1	-2.1	9.2
All other retailing	\$m	91.1	2.2	20.7	4 282.1	4.4	12.2
Total	\$m	236.2	2.2	10.5	12 378.9	1.6	8.4
Trend series							
Food retailing	\$m	82.6	0.1	4.3	4 847.2	0.4	4.7
Department stores	\$m	26.0	1.6	4.0	1 096.6	0.9	5.5
Hospitality and services	\$m	33.4	—	-2.6	2 065.2	0.6	10.6
All other retailing	\$m	87.7	1.0	20.0	4 121.9	1.0	10.6
Total	\$m	229.7	0.6	8.6	12 130.9	0.7	7.7

(a) Base year: 1989-90 = 100.0.

(b) Base of each index: September quarter 1997 = 100.0.

Indicator	Unit	ACT			Aust.		
		Latest figure	% change from		Latest figure	% change from	
			Previous period	Same period previous year		Previous period	Same period previous year
TOURISM AND TRANSPORT							
HOTELS, MOTELS AND GUEST HOUSE ACCOMMODATION, Jun qtr 99							
Original series							
Room nights	'000	284.9	7.7	26.1	10 395.6	10.3	7.8
Takings at current prices	\$m	25.4	7.2	13.9	946.4	-5.7	7.4
Guest arrivals	'000	226.9	5.0	6.8	8 306.6	-1.0	5.2
Guest nights	'000	482.0	3.4	14.4	18 622.5	-4.1	8.2
Room occupancy rate	%	66.4	3.3	1.8	60.8	-1.9	1.6
NEW MOTOR VEHICLE REGISTRATIONS, Nov 99							
Motor vehicles	no.	1 211	23.2	-2.1	65 858	15.8	-2.9
Seasonally adjusted motor vehicles	no.	1 205	11.4	-3.1	62 698	4.8	-6.7
Trend motor vehicles	no.	1 092	0.8	-11.7	60 659	—	-8.6
AGGREGATE INDICATORS							
STATE ACCOUNTS, Jun qtr 99(a)							
Original series (chain volume measures)(b)							
Household final consumption expenditure	\$m	1 637	3.6	4.5	87 576	3.6	5.3
General government final consumption expenditure	\$m	2 702	-4.4	12.7	27 968	12.1	4.2
Private gross fixed capital formation	\$m	354	-15.2	8.8	30 174	-11.1	-6.5
Public gross fixed capital formation	\$m	91	-11.5	-20.0	7 763	-8.9	78.9
State final demand	\$m	4 784	-1.2	8.4	153 481	8.4	4.5
Gross state product	\$m	11 943	4.3	n.a.	555 689	4.6	n.a.
STATE ACCOUNTS, Jun qtr 99(a)							
Original series (at current prices)							
Household final consumption expenditure	\$m	1 671	4.0	6.1	88 978	3.9	7.0
General government final consumption expenditure	\$m	2 779	-3.2	14.3	28 670	11.9	6.2
Private gross fixed capital formation	\$m	351	-23.4	7.6	30 431	13.4	-5.5
Public gross fixed capital formation	\$m	89	-378.1	-16.7	7 910	-9.2	83.7
State final demand	\$m	4 890	-0.3	9.9	155 990	8.4	5.7
Gross state product	\$m	12 040	4.5	n.a.	593 311	4.8	n.a.
PRIVATE NEW CAPITAL EXPENDITURE, Sep qtr 99							
Original series (at current prices)							
Buildings and structures	\$m	23	64.3	-36.1	2 805	-8.6	-23.5
Equipment, plant and machinery	\$m	49	-18.3	-9.3	7 887	7.1	-11.1
Total	\$m	72	-2.7	-20.0	10 691	2.5	-14.7
Trend series (at current prices)							
Buildings and structures	\$m	19	-5.0	-20.8	2 965	-11.4	-18.3
Equipment, plant and machinery	\$m	54	-20.6	28.6	7 573	-2.8	-8.5
Total	\$m	73	-17.0	10.6	10 478	-5.4	-11.5

(a) Quarterly state final demand details are released as a special data service (Product no. 5206.0.40.001).

(b) Reference year for chain volume measures is 1996-97.

Source: ABS publications: Australia Demographic Statistics (Cat. no. 3101.0), Australian National Accounts: State Accounts (Cat. no. 5242.0), Building Activity, Australia (Cat. no. 8752.0), Building Approvals, Australia (Cat. no. 8731.0), Consumer Price Index (Cat. no. 6401.0), Housing Finance for Owner Occupation, Australia (Cat. no. 5609.0), House Price Indexes: Eight Capital Cities (Cat. no. 6416.0), Industrial Disputes, Australia (Cat. no. 6321.0), Job Vacancies and Overtime, Australia (Cat. no. 6354.0), Labour Force, Australia, Preliminary (Cat. no. 6202.0), Labour Force, Australia (Cat. no. 6203.0), New Motor Vehicle Registration, Australia (Cat. no. 9301.0), Price Index of Materials Used in Housing Building (Cat. no. 6408.0), Private New Capital Expenditure, State Estimates (Cat. no. 5646.0), Retail Trade, Australia (Cat. no. 8501.0), Tourism Indicators, Australia (Cat. no. 8634.0), Tourism Accommodation, ACT (Cat. no. 8635.8).

Indicator	Unit	Latest period	NSW	Vic.	Qld	SA	WA	Tas.	NT	ACT	Aust.
POPULATION	'000	June qtr 99	6 411.7	4 712.2	3 512.4	1 493.1	1 861.0	470.3	192.9	310.2	18 966.8
LABOUR FORCE (trend)											
Employed persons	'000	Dec 99	2 969.7	2 219.5	1 657.1	675.3	927.5	198.4	92.6	164.5	8 905.7
Unemployment rate	%	Dec 99	6.1	6.8	8.3	8.2	6.6	9.4	4.5	5.7	6.9
WAGE AND SALARY EARNERS (trend)											
Public sector	'000	June qtr 99	461.9	305.3	289.1	113.3	148.2	41.1	22.2	66.8	1 447.7
Private sector	'000	June qtr 99	1 996.6	1 499.1	1 017.5	403.5	577.7	117.9	52.4	84.7	5 749.4
Total public and private sector (trend)	'000	June qtr 99	2 458.5	1 804.4	1 306.6	516.8	725.9	159.0	74.6	151.5	7 197.1
STATE ACCOUNTS(a) (original)											
Gross state product (chain volume measures)	\$m	1997-98	209 937	151 213	96 000	40 493	63 198	11 059	6 460	11 822	591 546
Gross state product (current prices)	\$m	1997-98	212 635	151 306	95 935	40 573	63 226	11 115	6 481	12 040	593 311
PRIVATE NEW CAPITAL EXPENDITURE (trend)	\$m	Sep qtr 99	3 579	2 824	1 701	627	1 517	108	259	61	10 639
BUILDING APPROVALS											
Dwelling units approved(original)	no.	Nov 99	4 482	4 223	3 052	993	2 389	176	192	205	15 712
Dwelling units approved (trend)	no.	Nov 99	4 309	4 033	2 877	867	2 104	147	140	227	14 810
Value of non-residential building approved (original)	\$m	Nov 99	263.0	222.3	289.3	36.2	95.1	5.6	26.8	51.1	989.5
Value of all buildings approved (original)	\$m	Nov 99	965.7	834.2	672.4	153.1	390.3	23.8	54.6	80.4	3 174.5
ENGINEERING CONSTRUCTION											
Value of engineering construction work done	\$m	Jun qtr 99	1 654.0	854.2	1 262.0	255.6	794.0	67.4	72.7	47.1	5 007.2
AVERAGE WEEKLY EARNINGS (trend)											
Full-time adult ordinary time	\$	Aug qtr 99	792.5	743.1	705.1	700.8	760.0	704.4	766.2	845.6	753.7
RETAIL TRADE (trend)											
Retail turnover	\$m	Nov 99	4 196.0	2 949.5	2 262.1	896.0	1 191.9	270.5	129.2	229.7	12 130.9
HOTELS, MOTELS & GUEST HOUSE ACCOMMODATION											
Room nights occupied	'000	Jun qtr 99	3 099.8	1 545.6	2 586.2	505.3	861.7	238.6	330.5	241.1	9 585.8
Room occupancy rate	%	Jun qtr 99	57.9	55.4	56.1	54.6	53.3	47.6	59.3	57.6	58.4
NEW MOTOR VEHICLE REGISTRATIONS (trend)	no.	Nov 99	21 782	16 654	9 621	3 852	5 748	1 206	704	1 092	60 659
	Unit	Latest period	Syd.	Melb.	Bris.	Adel.	Perth	Hob.	Dar.	Canb.	Aust.
CONSUMER PRICE INDEX											
Food(d)		Sep qtr 99	129.4	127.8	127.0	129.7	129.4	126.3	124.3	127.7	128.5
Housing(d)		Sep qtr 99	105.8	88.8	102.8	95.0	93.1	96.9	117.4	96.0	98.1
Transportation(d)		Sep qtr 99	127.9	125.9	125.5	127.8	127.4	123.1	122.6	131.6	126.9
All Groups(d)		Sep qtr 99	124.1	122.7	124.0	125.1	121.9	123.3	122.9	122.4	123.4
Average retail prices (cents)											
Milk, carton, supermarket sales	1 litre	Sep qtr 99	122	140	126	140	146	130	141	115	n.a.
Bread, white loaf, sliced, supermarket sales	680 g	Sep qtr 99	228	238	211	213	218	226	219	230	n.a.
Beef, rump steak	1 kg	Sep qtr 99	1 197	1 093	1 067	1 206	1 172	983	1 122	1 202	n.a.
Chicken, frozen	1 kg	Sep qtr 99	362	355	312	362	369	373	421	366	n.a.
Potatoes	1 kg	Sep qtr 99	127	153	132	80	154	80	128	140	n.a.
Coffee, instant (jar)	150 g	Sep qtr 99	610	640	636	568	671	604	561	493	n.a.
Scotch nip, public bar	30 ml	Sep qtr 99	334	322	273	363	389	264	332	270	n.a.
Private motoring petrol											
Leaded	1 litre	Sep qtr 99	78.4	76.4	69.9	78.0	78.4	82.8	83.1	80.6	n.a.
Unleaded	1 litre	Sep qtr 99	75.8	74.0	67.5	75.6	76.0	80.8	81.0	78.2	n.a.

(a) State estimates are not comparable to national estimates from the June quarter 1995 due to revised methodology used in *Australian National Accounts, State Accounts* (Cat. no. 5242.0).

(b) Experimental series. Users are cautioned these estimates are derived indirectly by calculating a deflator from the expenditure components of the state series concerned. Therefore, in general, the sum of the state estimates does not equal the estimates for Australia.

(c) Reference year for chain volume measures is 1996-97.

(d) Base year: 1989-90 = 100.0.

Indicator	Latest									
	period	NSW	Vic.	Qld	SA	WA	Tas.	NT	ACT	Aust.
POPULATION	June qtr 99	0.2	0.2	0.4	0.1	0.3	—	0.4	0.3	0.3
LABOUR FORCE (trend)										
Employed persons	Dec 99	0.2	0.1	0.2	0.5	0.4	0.2	-0.4	0.2	0.2
Unemployment rate	Dec 99	—	-0.1	0.1	—	-0.1	0.1	0.2	—	-0.1
WAGE AND SALARY EARNERS (trend)										
Public sector	June qtr 99	-0.8	—	1.1	0.4	1.6	-0.7	1.4	1.1	0.2
Private sector	June qtr 99	-0.7	—	3.3	-0.8	0.4	2.3	4.8	6.7	0.5
Total public and private sector	June qtr 99	-0.7	—	2.8	-0.6	0.6	1.4	3.8	4.2	0.4
STATE ACCOUNTS(a) (original)										
Gross state product (chain volume measures)(b)(c)	'1998-99	4.1	6.2	4.5	2.1	2.1	2.5	7.6	2.6	4.5
Gross state product (current prices)	'1998-99	5.4	6.2	4.4	2.3	2.1	3.0	8.0	4.5	4.8
PRIVATE NEW CAPITAL EXPENDITURE (trend)										
Total (at current prices)	Sep qtr 99	0.4	0.5	-6.6	9.6	0.7	-0.9	13.6	-18.7	-0.8
BUILDING APPROVALS										
Dwelling units approved (original)	Nov 99	8.9	10.0	3.0	25.1	31.3	25.7	74.5	61.4	13.0
Dwelling units approved (trend)	Nov 99	-2.0	0.5	3.1	3.5	0.9	5.8	4.5	2.7	0.9
Value of non-residential building approved (original)	Nov 99	-0.6	-6.1	85.8	14.6	-29.7	-40.4	148.1	281.3	15.4
Value of all buildings approved (original)	Nov 99	9.5	2.2	25.0	22.3	8.3	-11.2	96.4	127.1	12.9
ENGINEERING CONSTRUCTION										
Value of engineering construction work done	Jun qtr 99	28.4	-1.7	20.2	18.0	14.1	7.8	8.5	12.1	16.7
AVERAGE WEEKLY EARNINGS (trend)										
Full-time adult ordinary time	Aug qtr 99	0.5	0.8	0.4	0.1	1.0	0.6	1.1	0.4	0.6
RETAIL TRADE (trend)										
Retail turnover	Nov 99	0.5	0.4	1.1	1.2	0.8	-0.1	0.7	0.6	0.7
HOTELS, MOTELS & GUEST HOUSE ACCOMMODATION										
Room nights occupied	Jun qtr 99	-3.5	-8.0	3.9	-3.7	-2.0	-27.2	43.8	-0.7	-3.2
Room occupancy rate	Jun qtr 99	-2.7	-6.6	1.2	-3.4	-2.5	-18.5	17.1	-1.3	-1.0
NEW MOTOR VEHICLE REGISTRATIONS (trend)	Nov 99	-0.1	0.7	-1.3	0.5	-0.3	0.8	2.2	0.8	—
	Latest									
	period	Syd.	Melb.	Bris.	Adel.	Perth	Hob.	Dar.	Canb.	Aust.
CONSUMER PRICE INDEX										
Food(d)	Sep qtr 99	0.5	0.9	0.6	0.7	-0.2	-0.4	120.6	-0.5	0.5
Housing(d)	Sep qtr 99	1.4	1.5	0.8	2.4	2.0	1.0	0.4	1.4	1.6
Transportation(d)	Sep qtr 99	3.0	3.5	3.0	4.4	3.4	2.2	2.8	2.7	3.3
All Groups(d)	Sep qtr 99	0.9	1.0	0.7	1.2	0.9	0.7	0.2	0.7	0.9
Average retail prices (cents)										
Milk, carton, supermarket sales	Sep qtr 99	—	—	—	2.9	3.5	—	4.4	0.0	n.a.
Bread, white loaf, sliced, supermarket sales	Sep qtr 99	8.1	2.1	5.5	30.7	7.4	11.3	-0.5	8.5	n.a.
Beef, rump steak	Sep qtr 99	-4.2	0.3	3.3	0.4	3.0	-9.1	-7.0	-1.0	n.a.
Chicken, frozen	Sep qtr 99	2.5	0.3	-10.3	2.5	1.9	-3.6	-1.4	8.9	n.a.
Potatoes	Sep qtr 99	-2.3	-1.3	-2.9	-1.2	12.4	-2.4	-19.5	-1.4	n.a.
Coffee, instant (jar)	Sep qtr 99	-6.9	8.1	0.5	-3.1	9.1	-5.0	-0.5	-5.2	n.a.
Scotch nip, public bar	Sep qtr 99	0.9	0.3	0.7	—	0.5	—	-0.3	-1.1	n.a.
Private motoring petrol										
Leaded	Sep qtr 99	8.0	8.8	10.4	9.6	7.4	6.3	5.6	8.0	n.a.
Unleaded	Sep qtr 99	8.1	9.1	10.8	9.9	7.5	6.5	5.6	8.2	n.a.

(a) State estimates are not comparable to national estimates from the June quarter 1995 due to revised methodology used in *Australian National Accounts, State Accounts* (Cat. no. 5242.0).

(b) Experimental series. Users are cautioned these estimates are derived indirectly by calculating a deflator from the expenditure components of the state series concerned. Therefore, in general, the sum of the state estimates does not equal the estimates for Australia.

(c) Reference year for chain volume measures is 1996-97.

(d) Base year: 1989-90 = 100.0.

SELF-HELP ACCESS TO STATISTICS

- CPI INFOLINE* For current and historical Consumer Price Index data, call 1902 981 074 (call cost 75c per minute).
- DIAL-A-STATISTIC* For the latest figures for National Accounts, Balance of Payments, Labour Force, Average Weekly Earnings, Estimated Resident Population and the Consumer Price Index call 1900 986 400 (call cost 75c per minute).
- INTERNET* www.abs.gov.au
- LIBRARY* A range of ABS publications is available from public and tertiary libraries Australia-wide. Contact your nearest library to determine whether it has the ABS statistics you require.

WHY NOT SUBSCRIBE?

- PHONE* +61 1300 366 323
- FAX* +61 3 9615 7848

CONSULTANCY SERVICES

ABS offers consultancy services on a user pays basis to help you access published and unpublished data. Data that is already published and can be provided within 5 minutes is free of charge. Statistical methodological services are also available. Please contact:

<i>INQUIRIES</i>	<i>City</i>	<i>By phone</i>	<i>By fax</i>
	Canberra	02 6252 6627	02 6207 0282
	Sydney	02 9268 4611	02 9268 4668
	Melbourne	03 9615 7755	03 9615 7798
	Brisbane	07 3222 6351	07 3222 6283
	Perth	08 9360 5140	08 9360 5955
	Adelaide	08 8237 7400	08 8237 7566
	Hobart	03 6222 5800	03 6222 5995
	Darwin	08 8943 2111	08 8981 1218

POST Client Services, ABS, PO Box 10, Belconnen ACT 2616

EMAIL client.services@abs.gov.au



2130380001002
ISSN 1320-808X

RRP \$15.50